

Power Inductor CPN3722 Series



PART NUMBERING GUIDE

CPN3722-M 101 TR

TOLERANCE

M=20%, K=10%,
L=15%

INDUCTANCE CODE

PACKAGING OPTIONS

Blank=Bulk,
TR= Tape and Reel
(500pcs per reel)

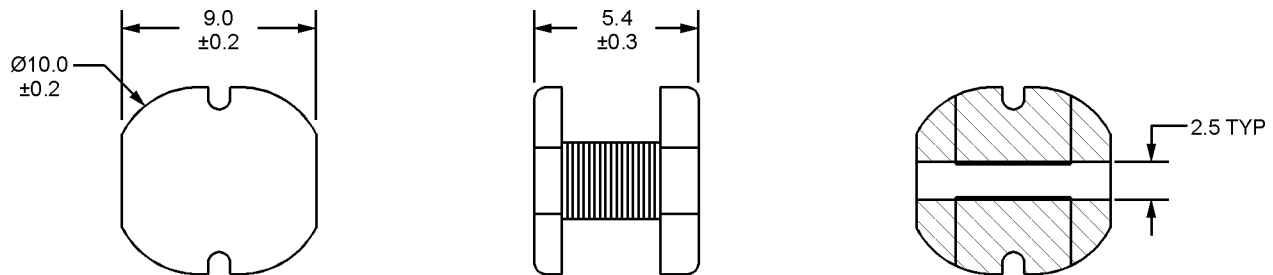
GENERAL SPECIFICATIONS

Inductance Range	10 μ H to 820 μ H
Tolerance	20%, 15%, or 10%
Construction	Ferrite Core

SPECIFICATIONS BY INDUCTANCE VALUE

Inductance Code	Inductance (μ H)	Available Tolerance	Test Frequency (Hz)	DCR Max (Ohms)	IDC Max (A)
100	10	20%	2.52M	0.06	2.60
120	12	20%	2.52M	0.07	2.45
150	15	20%	2.52M	0.08	2.27
180	18	20%	2.52M	0.09	2.15
220	22	20%	2.52M	0.10	1.95
270	27	20%	2.52M	0.11	1.76
330	33	20%	2.52M	0.12	1.50
390	39	20%	2.52M	0.14	1.37
470	47	20%, 15%, 10%	2.52M	0.17	1.28
560	56	20%, 15%, 10%	2.52M	0.19	1.17
680	68	20%, 15%, 10%	2.52M	0.22	1.11
820	82	20%, 15%, 10%	2.52M	0.25	1.00
101	100	20%, 15%, 10%	1.00K	0.35	0.97
121	120	20%, 15%, 10%	1.00K	0.40	0.89
151	150	20%, 15%, 10%	1.00K	0.47	0.78
181	180	20%, 15%, 10%	1.00K	0.63	0.72
221	220	20%, 15%, 10%	1.00K	0.73	0.66
271	270	20%, 15%, 10%	1.00K	0.97	0.57
331	330	20%, 15%, 10%	1.00K	1.15	0.52
391	390	20%, 15%, 10%	1.00K	1.30	0.48
471	470	20%, 15%, 10%	1.00K	1.48	0.42
561	560	20%, 15%, 10%	1.00K	1.90	0.33
681	680	20%, 15%, 10%	1.00K	2.25	0.28
821	820	20%, 15%, 10%	1.00K	2.55	0.24

MECHANICAL DIMENSIONS



Dimensions in mm

3545B Cadillac Avenue, Costa Mesa, CA., 92626-1401 • Phone: (714) 708-8715 • Fax: (714) 708-8719
 Email: ct-sales@coiltechinc.com • Internet: <http://www.coiltechinc.com> Contact factory for latest revision

A27

Specifications subject to change without notice. • 6/02 • (NM46)