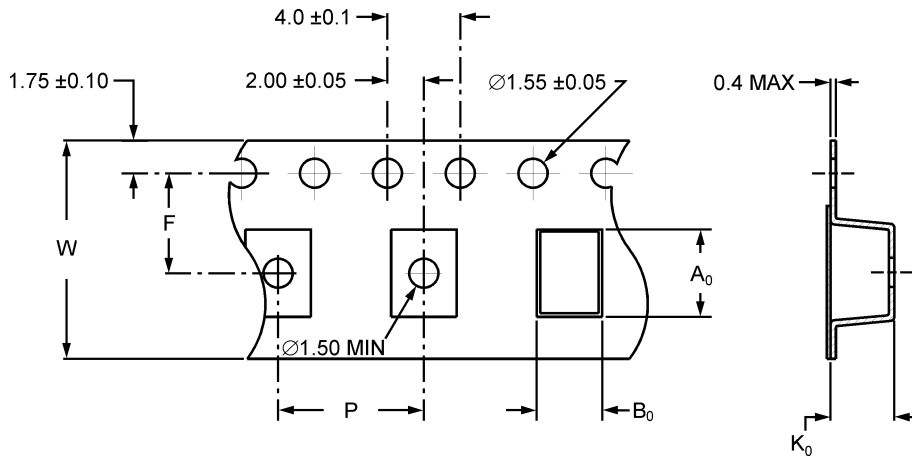


TAPE & REEL SPECIFICATIONS

TAPE DIMENSIONS



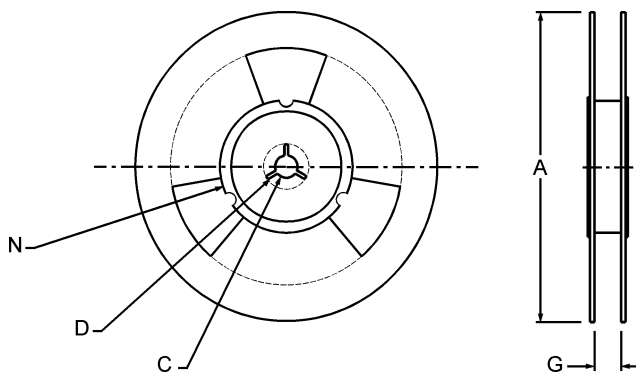
Dimensions in mm

8mm Tape		12mm Tape	
W	8.00 ± 0.20mm	W	12.0 ± 0.30mm
P	4.00 ± 0.10mm	P	8.00 ± 0.10mm
F	3.50 ± 0.05mm	F	5.50 ± 0.05mm
Compliant to EIA-481A (Including A ₀ , B ₀ , & K ₀)			

8mm Tape	12mm Tape
CWS1210	CWS1812
CWS0805	CMB1812
CWS1008	CMB1806
CMC0805	
CMC1206	
CMH0805	
CMB1210	
CMB1206	
CMH0603	

REEL DIMENSIONS

Dimensions in mm



Part Number Series	Parts Per Reel (Max)
CWS1812	500
CWS1210	2000
CWS0805	3000
CWS1008	2000
CMC0805	2000
CMC1206	2000
CMH0805	2000
CMB1812	1000
CMB1806	2000
CMB1210	2500
CMB1206	2000
CMB0805	2000
CMH0603	4000

Tape Size	A	C	D	N	G
8mm	178.0 ± 2.0	13.0 ± 0.5	21.0 ± 1.0	62.0 ± 2.0	9.5 Typical
12mm	178.0 ± 2.0	13.0 ± 0.5	21.0 ± 1.0	62.0 ± 2.0	13.5 Typical

3545B Cadillac Avenue, Costa Mesa, CA., 92626-1401 • Phone: (714) 708-8715 • Fax: (714) 708-8719

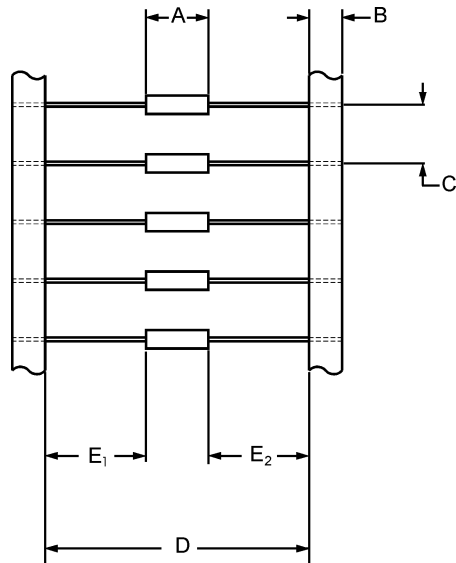
D 1

Email: ct-sales@coiltechinc.com • Internet: <http://www.coiltechinc.com>

Specifications subject to change without notice. • Contact factory for latest revision • 8/98 •

TAPE & REEL SPECIFICATIONS

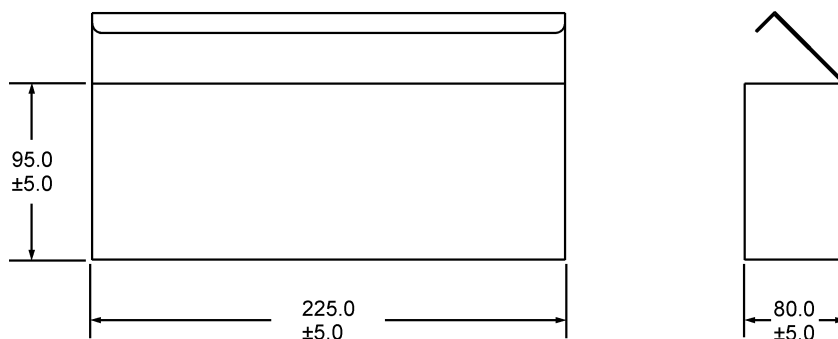
TAPE DIMENSIONS



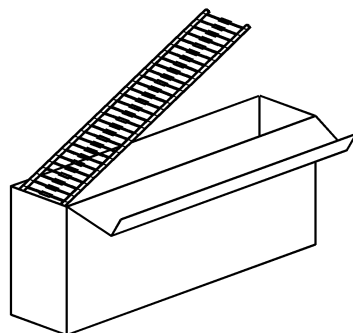
Part Number Series	A	B	C	D	E ₁ - E ₂	Parts Per Reel (Max)
CCA1128	7.0 Max	6.0 ±1.0	5.0 ±0.5	52.4 ±1.0	1.0 Max	5000
CCA1741	10.5 Max	6.0 ±1.0	5.0 ±0.5	52.4 ±1.0	1.0 Max	5000
CCA0913	3.4 Max	6.0 ±1.0	5.0 ±0.5	52.4 ±1.0	1.0 Max	5000
CCA1028	7.0 Max	6.0 ±1.0	5.0 ±0.5	52.4 ±1.0	1.0 Max	5000
CMA1025	6.35 ±0.25	6.0 ±1.0	5.0 ±0.5	52.4 ±1.0	1.0 Max	5000
CMA1641	10.41 ±0.50	6.0 ±1.0	5.0 ±0.5	52.4 ±1.0	1.0 Max	5000
CSA1439	10.0 ±0.4	6.0 ±1.0	5.0 ±0.5	52.4 ±1.0	1.0 Max	5000
CPA2670	17.78 Max	6.0 ±1.0	10.0 ±1.0	52.4 ±1.0	1.0 Max	1000
CPA2665	16.4 ±0.5	-	10.0 ±1.0	52.0 ±1.0	-	1000
CPA2657	14.5 ±0.4	-	10.0 ±1.0	52.0 ±1.0	-	1000
CVA1831	8.0 Max	6.0 ±1.0	5.0 ±0.5	52.4 ±1.0	1.0 Max	5000
CVA1839	10.0 Max	6.0 ±1.0	5.0 ±0.5	52.4 ±1.0	1.0 Max	5000
CVA1847	12.0 Max	6.0 ±1.0	5.0 ±0.5	52.4 ±1.0	1.0 Max	5000
CVA2439	10.0 Max	-	5.0 ±0.5	52.0 ±1.0	-	3000
CVA3165	16.4 ±0.5	-	10.0 ±1.0	52.0 ±1.0	-	1000

Dimensions in mm

FLAT PACK FOR AXIAL INDUCTORS



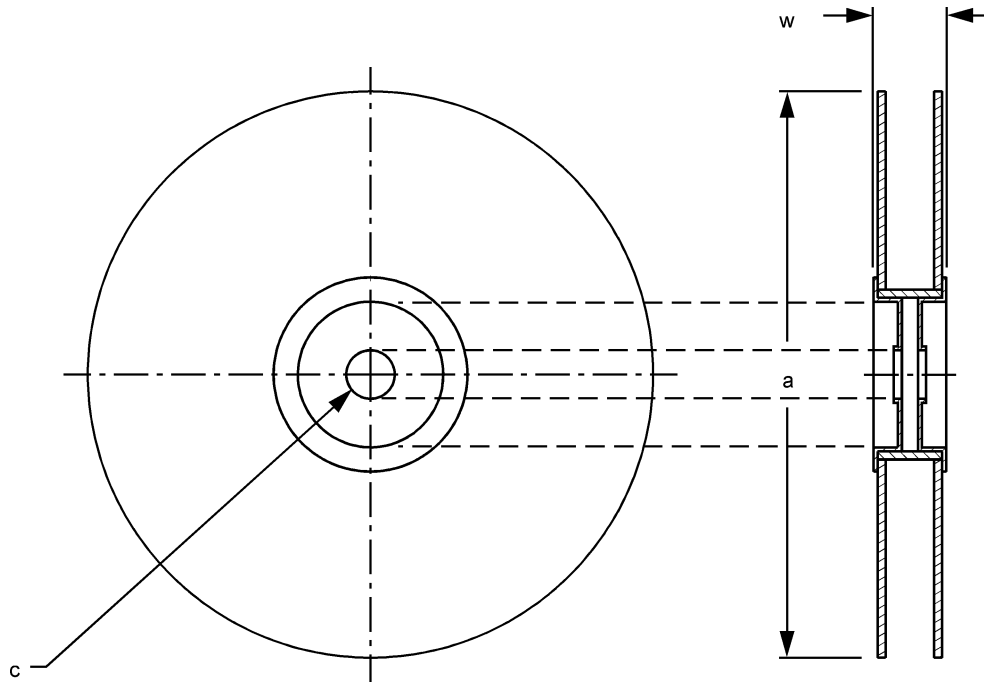
Part Number Series	Parts Per Flat Pack
CCA1128	3000
CCA1741	3000
CCA0913	3000
CCA1028	3000
CMA1025	3000
CMA1641	3000
CSA1439	3000



Dimensions in mm

TAPE & REEL SPECIFICATIONS

REEL DIMENSIONS

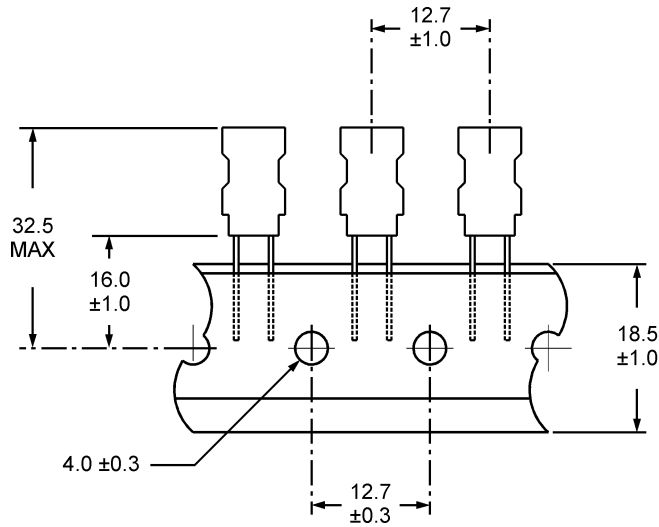


Part Number Series	a	c	w
CCA1128	370 Max	30.0 ±1.0	80.0 ±1.0
CCA1741	370 Max	30.0 ±1.0	80.0 ±1.0
CCA0913	370 Max	30.0 ±1.0	80.0 ±1.0
CCA1028	370 Max	30.0 ±1.0	80.0 ±1.0
CMA1025	370 Max	30.0 ±1.0	80.0 ±1.0
CMA1641	370 Max	30.0 ±1.0	80.0 ±1.0
CSA1439	370 Max	30.0 ±1.0	80.0 ±1.0
CPA2670	370 Max	30.0 ±1.0	80.0 ±1.0
CPA2665	370 Max	-	78.0 ±2.0
CPA2657	370 Max	-	78.0 ±2.0
CVA1831	370 Max	30.0 ±1.0	80.0 ±1.0
CVA1839	370 Max	30.0 ±1.0	80.0 ±1.0
CVA1847	370 Max	30.0 ±1.0	80.0 ±1.0
CVA2439	370 Max	-	78.0 ±2.0
CVA3165	370 Max	-	78.0 ±2.0

Dimensions in mm

TAPE & REEL SPECIFICATIONS

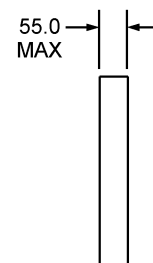
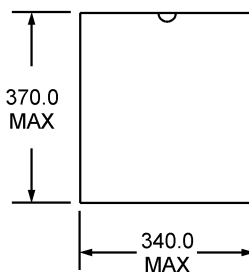
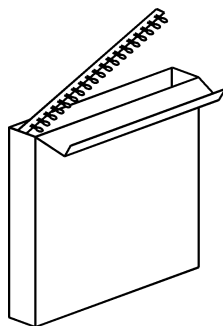
TAPE FOR RADIAL INDUCTORS



Dimensions in mm

FLAT PACK FOR RADIAL INDUCTORS

Part Number Series	Parts Per Flat Pack
CVR2031	2000
CVR2839	1300
CVR3549	600
CVR5155	500



Dimensions in mm